



TK Maxx | Kyle Centre, Portlaoise



Houghton Building | IT Carlow



Bagenalstown Credit Union | Carlow



Cash Building | Tallaght IT, Dublin



Clonmel Healthcare | Tipperary



St Johns College | Waterford



Toyota Garage | Liffey Valley



James Hardiman Library | NUIG

electrical engineering contractors



“Our mission is to be Ireland’s leading Electrical services contractor, known for our ability to deliver quality projects across all aspects of the construction environment”



Excel Electrical is a leading electrical contractor with a proven track record of delivering a variety of construction projects, on time, on budget and with an excellent safety record.

Established in 1996, Excel Electrical have grown to become a leading Electrical Contractor with a proven track record of delivering a diverse range of projects across the complete spectrum and operate on a nationwide basis.

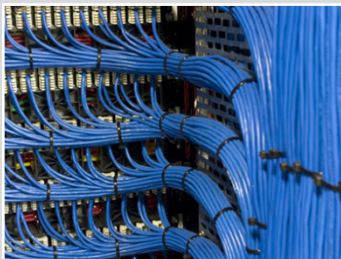
We have worked with all of the well-known Main Contractors and design teams on a variety of

prestigious and exciting projects across the country.

Our accreditations include;
ISO 9001:2015 Quality, ISO 14001 Environmental
OHSAS 18001 Occupational Health & Safety.

We view gaining recognised accreditations as a means of signalling to our clients and stakeholders that the organisation is committed to protecting the needs of all our stakeholders.

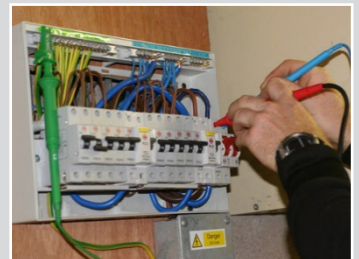
Services



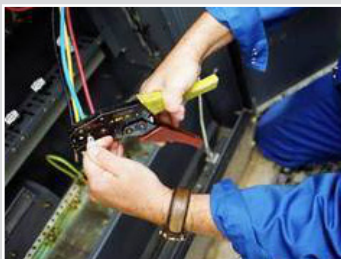
Data & Communications



Security Solutions



Electrical Installations



Electrical Maintenance



PAT Testing



Event Power Hire

Our main areas of focus are;

- Industrial
- Retail
- Heritage
- Commercial
- Residential
- Public works





Luan Art Gallery | Athlone



NDFA Schools Program | Milltown, Kerry



Smock Alley Theatre | Temple Bar, Dublin 8



Sheridans Insurances | The Arc, Drinagh, Wexford



Smithwicks Experience | Kilkenny City



St Mary's Hall | Kilkenny City

Accreditations



NSAI ISO: 9001 2015 Quality Certified - Members of C.I.F.
 NSAI ISO: 14001 2015 Environmental certified - Members of R.E.C.I.
 NSAI OHAS: 18001 2007 Health & Safety - Members of A.E.C.I

NSAI IS EN: 50131 Intruder Alarms Certified - PSA Certified Member
 NSAI SR 40: 2005 CCTV Installer Certified
 Certified Belden, 3M & Nexans Structured cabling



Donal Corcoran
Managing Director



Maria Croke
Financial Controller



Val Needham
Surveying Manager



Paula Prendergast
Purchasing Manager



Ann Mullaly
SHEQ Coordinator



Richard Duffin
Health & Safety



David Treacy
Head of Engineering



Alan Salter
BIM Coordinator